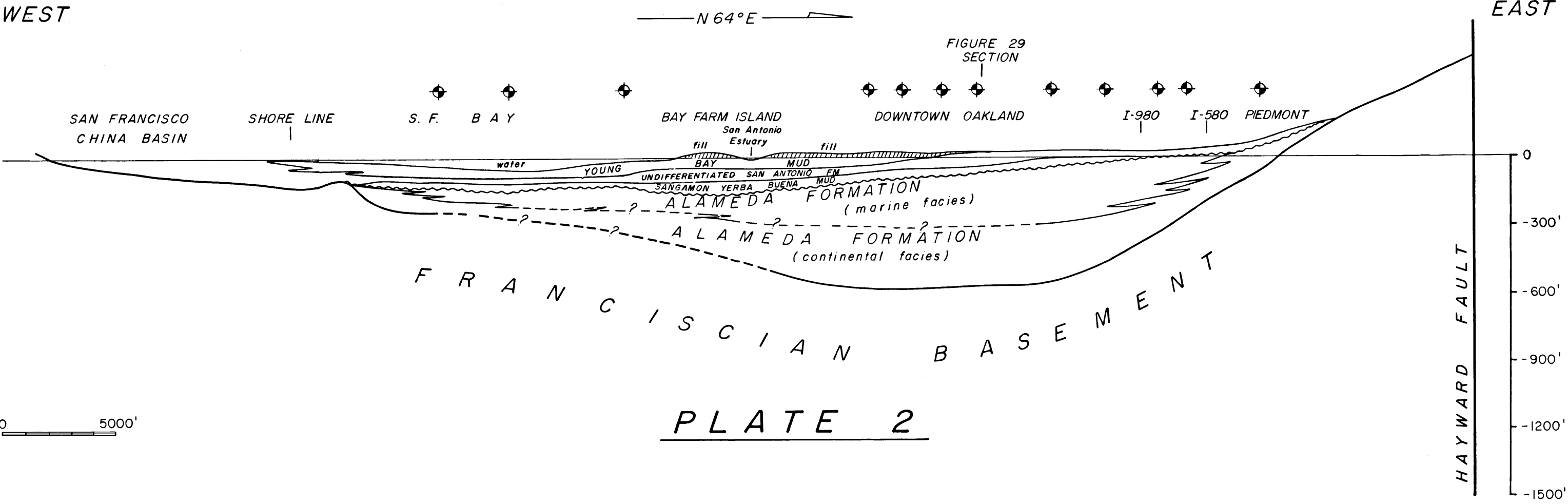


WEST

EAST



0 5000'

PLATE 2

TO ACCOMPANY N.S.F. REPORT "ENGINEERING GEOLOGIC SITE CHARACTERIZATION OF THE GREATER OAKLAND-ALAMEDA AREA, ALAMEDA AND SAN FRANCISCO COUNTIES, CA." by J.D. Rogers & S.H. Figuers

NO.	BY	DATE	REVISION	APP'D.
GEOLOGIC CROSS-SECTIONS THROUGH CENTRAL SAN FRANCISCO BAY				
Drawn: JDR, SHF	Scale: AS SHOWN	Sheet No:		
Checked:	Date: DEC. 30, 1991	of		
Approved:		Drawing No:		
Ref.No: BCS-9003785		PLATE 2		
ROGERS/PACIFIC PROFESSIONAL ENGINEERING CONSULTANTS 395 Civic Drive • Pleasant Hill, California 94523 (415) 682-7601				